



Retail Execution Data Hub on AWS

www.sigmoid.com





About Sigmoid

Sigmoid is an emerging leader in data engineering and AI solutions.



750+

Employees



Work with **30+**
Fortune 500 firms



>97%

CSAT score



200+

ML models operationalized



5000+

Data pipelines built

Backed by

SEQUOIA 

Awards and Recognition

500™

Technology **Fast 500**
2023 NORTH AMERICA
Deloitte.

***ISG**

Provider Lens 2023 Quadrant

Analytics Services
Rising Star, U.S. ★

Report releasing Jan 2024



America's
Fastest-Growing
Private Companies



Open Source data
solution provider
of the year



FORRESTER
Now Tech:
AI Consultancies,
Q1, 2021 Report

Major Contender in

EVEREST GROUP

Analytics and AI Services Specialists
PEAK Matrix (2022)

Offices



New York



San Francisco



Dallas



Lima



Bangalore



Amsterdam

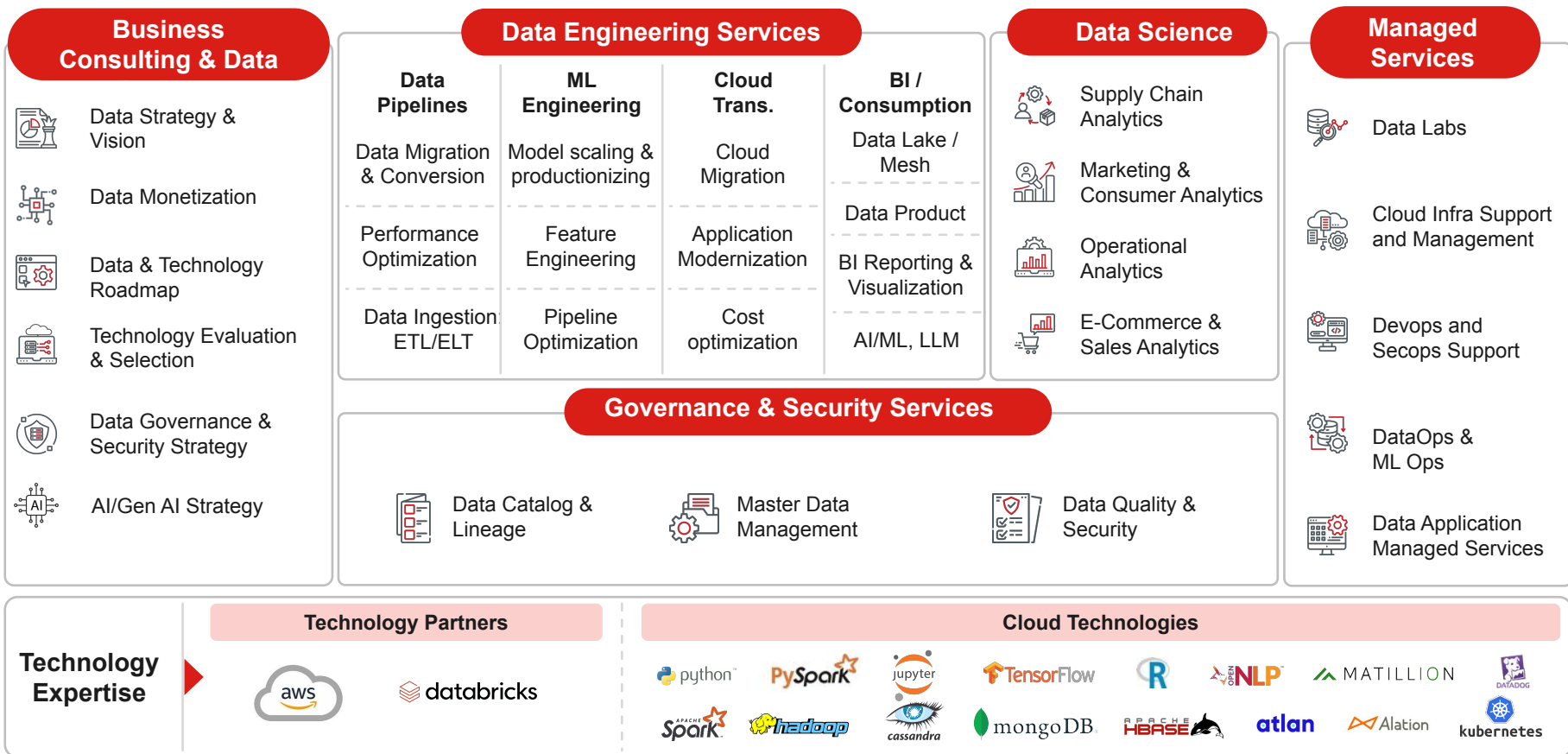


London



Sao Paulo

Enabling Business Transformation with Full-Service Capability Suite



Sigmoid Capabilities - Experience in implementing data solutions in AWS

Sigmoid has worked with more than Five large customers to design, build and deploy solutions in AWS

Data Processing & Transformation:

- **Amazon EMR:** Collaborative Apache Spark-based analytics platform used for big data processing and machine learning.
- **AWS Glue:** Fully managed ETL (Extract, Transform, Load) service for preparing and transforming data.

Data Analytics & Visualization:

- **Amazon Redshift:** Data warehouse service used for analyzing large datasets with either serverless or provisioned resources.
- **Amazon QuickSight:** Business intelligence tool for creating interactive visualizations and reports.

Data Storage & Management:

- **Amazon S3:** Scalable and secure data lake for storing large amounts of structured and unstructured data.
- **Amazon RDS:** Managed relational database service for structured data storage.

Data Ingestion & Integration:

- **AWS Data Pipeline:** Creating data workflows that move and process data across AWS services.
- **Amazon Kinesis:** Real-time data ingestion from applications, devices, or any streaming data sources.



Machine Learning & AI:

- **Amazon SageMaker:** End-to-end platform for building, training, and deploying machine learning models.
- **AWS AI Services:** Pre-built AI services for vision, speech, language, and decision-making (e.g., Amazon Rekognition, Polly, Comprehend, Textract).

Security & Compliance:

- **AWS IAM (Identity & Access Management):** Identity and access management service.
- **AWS Organizations & AWS Config:** Governance and compliance tools for managing AWS environments at scale.

Sigmoid's implementation of solutions in AWS involves leveraging a combination of services and tools tailored to specific business needs. Sigmoid would facilitate collaboration between data engineers, data scientists, business analysts, and other stakeholders to align the implementation with business goals and ensure success.

Retail Execution Data Hub



Sigmoid's Retail Execution Data Hub solving data challenges and giving visibility to retail sales teams



Headwinds in Retail Execution

Complexities in the retail environment

Complex retail landscape with modern trade being an important channel. Also **lack of visibility on in-store retail execution**

Intense competition for visibility and **difficulty in comparing performance** of granular media strategies

Inability to measure retail execution in a timely manner and take immediate actions

Challenges due to disparate data

Variations in data formats and structures due to data coming in from third party sources, partners or public APIs

Legacy Systems lacking modern integration capabilities



Solved by our Data Hub with Curated Views

Solving challenges around fragmented retail data, lack of data quality & lack of timely execution

A single source of truth to track performance of key metrics and measure success of retail execution strategies at granular level

Provides **out of the box dashboards for different Personas** like Executives, Category/Brand Managers Retail Managers, etc.

Address multiple areas of retail execution including metrics like, **Sales, Day 1 readiness, On Shelf Availability**, etc.

Solving for key data management challenges

Aggregates, consolidates and harmonizes the data across varied sources, performing **data quality checks**, ensuring data consistency



Driving Benefits for CPGs in a short span

Automated dashboards with quick loading - reduction of loading time by 90%

Generation **50% of cost savings** opportunities due to curated views such as inventory visibility, On-Shelf Availability tracking, etc

High granularity of our solution showed the impact of retail policies at an individual store level, enabling the tracking of store level metrics

Success Story - Improvement in Retail Store Execution

Case Background

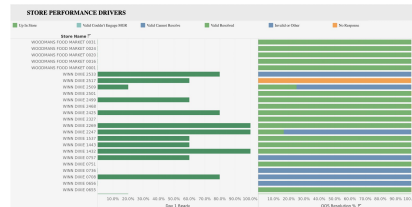
- The client is a **leading company in global snacking**, international cereals and noodles, with iconic world-class brands
- The **retail sales team** needed to keep a track of sales, inventory, product placement across different stores, territory and area
- They **relied on legacy data warehouse and un intuitive dashboards**, lead to time-consuming processes, errors
- They **wanted an automated solution with enhanced user friendly dashboards for relevant KPIs**

Sigmoid Solution

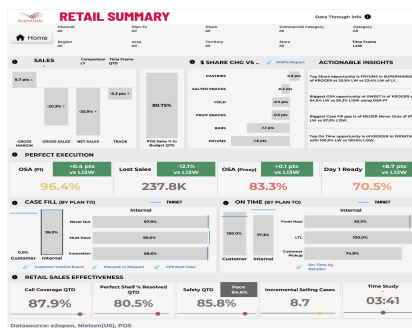
Created a cloud data store by unifying multiple data sources to furnish data at most granular level (store, product and week)



Fast loading dashboards with data privacy protocols enabling analysis till store level. Also streamlined data refreshes and validation mechanism ensures data continuity and consistency



Unified hub meeting the needs of different personas – summary views for leadership and detailed analysis for retail sales team



Business Impact

90%
improvement in
query
performance

80%
coverage of
retailers in the
USA

5x
Cost reduction
from
decommissioning
on-prem data
centres

Engagement Models



Sigmoid's Engagement Models

Project Based



- Starts with consulting/scoping (2-3 weeks)
- Delivery Program Management
- Interim review
- Success criteria met and IP handover
- Option to continue with product support
- Fixed bid contract
- 3-5 months duration given complexity of problem

Benefits

- Cost effective
- KPI/SLA/Outcome driven
- Suitable for Fixed scope of work
- Less overheads

Staff Augmentation



- Understanding of skill requirements
- Profile match and rate card
- Onboarding and monthly billing
- Focused training based on client tech stack
- Project Management support
- 10% backup resources unbilled and trained

Benefits

- Scalability
- Flexibility in resourcing
- Ability to change/redefine scope

Hybrid-Flexi Model/Data Labs/CoE



- Mix of project and staff augmentation engagements
- Requirement gathering
- Requirement classification - as project or staff augmentation
- Joint delivery plan
- Secure resources internally from Sigmoid and bill monthly
- Dedicated PM, Engineering Managers
- Dedicated Management Consultant(s)
- Dedicated Team Leads and Product Owners

Benefits

- Cost effectiveness by focus on output
- Ability to change/redefine scope/Change requests
- Risk/Reward linked to KPI/SLA

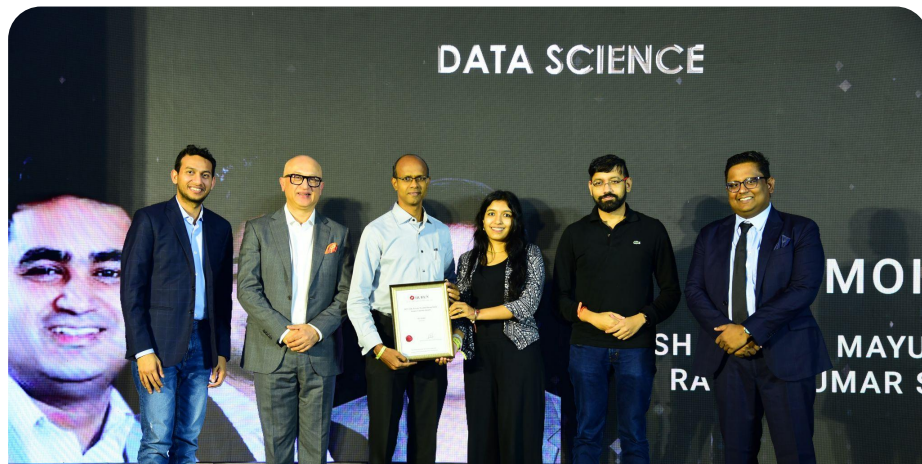
Thank you



Email: abhishek.vora@sigmoidanalytics.com



Website: www.sigmoid.com

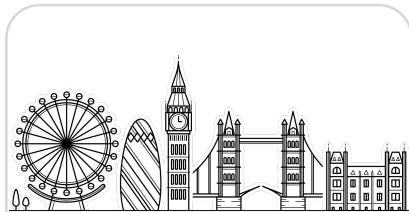


'India Future Unicorn Award'
in Data Science category by Hurun India

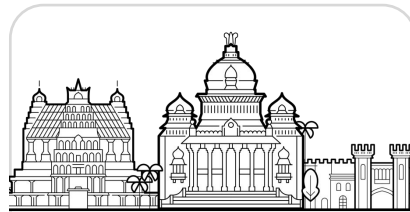
Global presence:



USA (NY, SF, Dallas,
Chicago)



EU (Amsterdam,
London)



India
(Bengaluru)



LATAM (Lima)